

Installation Manual on Intra SSL Service

Note 1) No installation is allowed without administrator authority.
Install to an account with administrator authority given.

Note 2) The present manual covers up to Connection to Intra SSL.
Once you succeeded in connecting to Intra SSL, connect to each system.

Note 3) All contents on this manual are based on Microsoft Edge Browser.

Installation Manual on Intra SSL Service (PC Check)

Written by

TOYOTA SYSTEMS
CORPORATION

Date

Jul. 24, 2023

Table of Contents

Contents	Page
Contact Information	2
An Overview of Installation	3
STEP1: Change your initial password	5
STEP2: Install certificate and software	7
STEP3: Connect to Intra SSL	28
F A Q	32

For any inquiries, please contact:

TS CUSTOMER CENTER

Mail: ts_customer_center_en@mailty.custhelp.com

A Question and Answer web service is

[<https://ts-customer-center.custhelp.com/>](https://ts-customer-center.custhelp.com/)

Installation Manual on Intra SSL Service (PC Check)

Written by

TOYOTA SYSTEMS
CORPORATION

Date

Jul. 24, 2023

An Overview of Installation

<< A case in which Intra SSL Service (PC Check) is installed to new PC >>

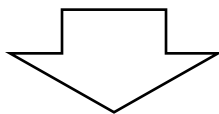
Perform STEP 1 → 2 → 3 shown below .

Read page 5 or later for Operational Procedure on each STEP.

[STEP1]

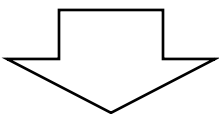
Change your initial password

[STEP2]

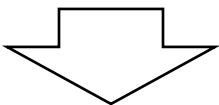


Install certificate and software

[STEP3]



Connect to Intra SSL



End
Connect to each system.

Installation Manual on Intra SSL Service (PC Check)

Written by

TOYOTA SYSTEMS
CORPORATION

Date

Jul. 24, 2023

<< A case in which PC Check function is added to a PC wherein Intra SSL Service is currently used >>

Perform STEP 2 and 3 shown below .

Skip STEP 1.

Read page 11 or later for Operational Procedure on each STEP.

[STEP2]

Install a Certificate

[STEP3]



Connect to Intra SSL



End
Connect to each system.

[STEP1] Change your initial password

Written by

TOYOTA SYSTEMS
CORPORATION

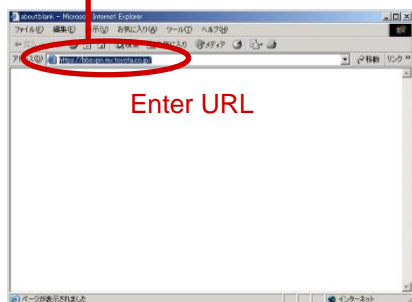
Date

Jul. 24, 2023

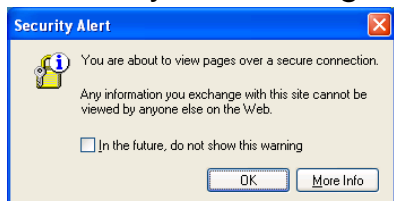
- (1) Start up the browser (Microsoft Edge). Enter the following URL in the address bar and press Enter.

https://da-ssl.d-cruise.jp/

Attention!

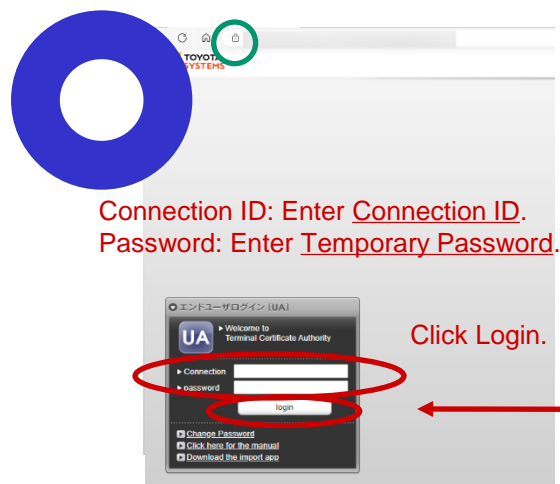
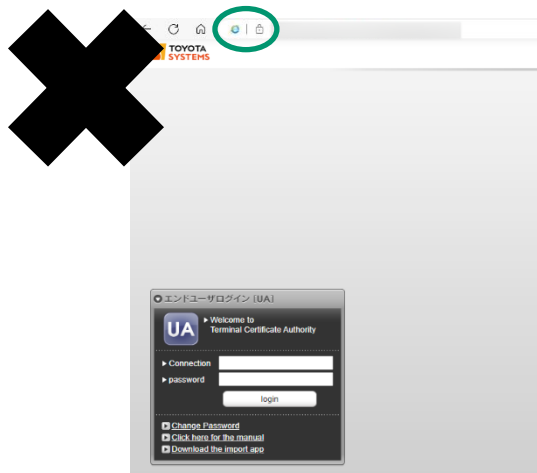


- * If the security alert dialog as shown below appears, press OK.



- (2) Enter **Connection ID** and **Initial Password** described in *Intra SSL Application Connection ID (Registration)*. Then, click Login.

Notes: (1) See *Intra SSL Application Connection ID (Registration)*.
(2) **Make sure the password be correct. ex. O and 0, I and 1.**
(3) No need to use IE mode.



Connection ID: Enter Connection ID.
Password: Enter Temporary Password.

Click Login.

[STEP1] Change your initial password

Written by

TOYOTA SYSTEMS
CORPORATION

Date

Jul. 24, 2023

- (3) Current Password → Re-enter the **Initial Password** you entered at (2).
New Password → Enter **more than 6-digit alphanumeric characters**.
New Password(confirm) → Re-enter your New Password you entered above.



[Password Change]

Enter Password

This page is for you to change the password. Please enter your password in the form below. All fields require input. Password change will not be complete if any form is left blank. Password is case alphanumeric or symbols of more than six characters. For other password policies, please refer "[What characters can I use for my password](#)" from FAQ.

Enter Password

Connection ID ★ :

Current Password ★ :

New Password ★ :

New Password(confirm) ★ :

Change

Enter each Password as described above and click Change.

- (4) When the password change completion screen is displayed, click Return to login screen. This completes the initial password setting procedure.



[Password Change]

Changing the password is complete.

[Back to login page](#)

[STEP2] Install certificate and software

Written by

TOYOTA SYSTEMS
CORPORATION

Date

Jul. 24, 2023

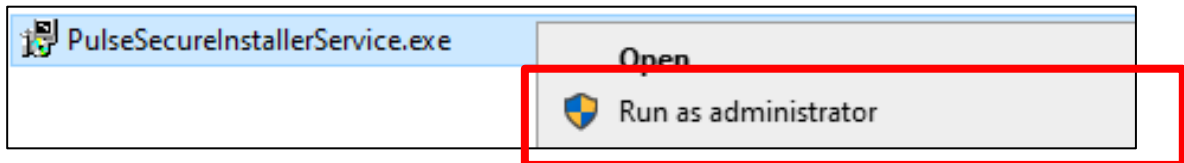
Remarks

- * This task is required only the first time.
- * Username is available only in a PC to which you installed the certificate.
- * If you want to use the ID in another PC, please contact the helpdesk depicted in page 2.
- * If possible, please disable antivirus software and asset management tools if they are installed.

Installing Related Software

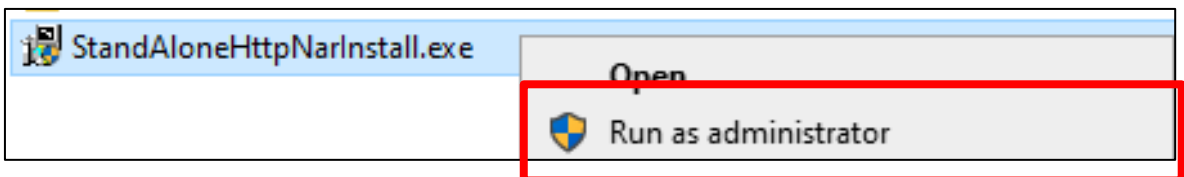
(5) Please download from the URL below and right-click to run as administrator.

<https://www.toyotasystems.com/service/network/intra-ssl/jp/doc/PulseSecureInstallerService.exe>



(6) Please download from the URL below and right-click to run as administrator.

<https://www.toyotasystems.com/service/network/intra-ssl/jp/doc/StandAloneHttpNarInstall.exe>



[STEP2] Install certificate and software

Written by

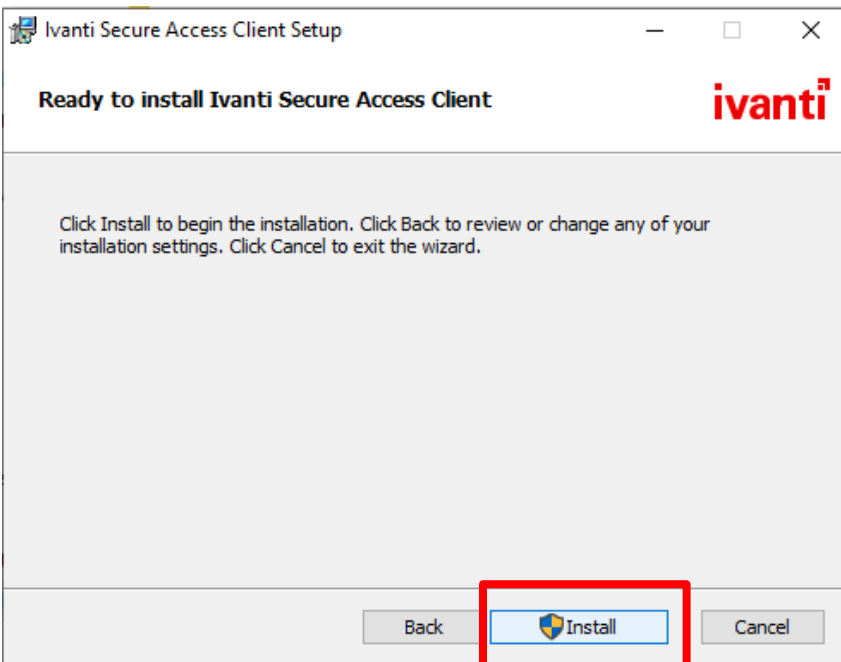
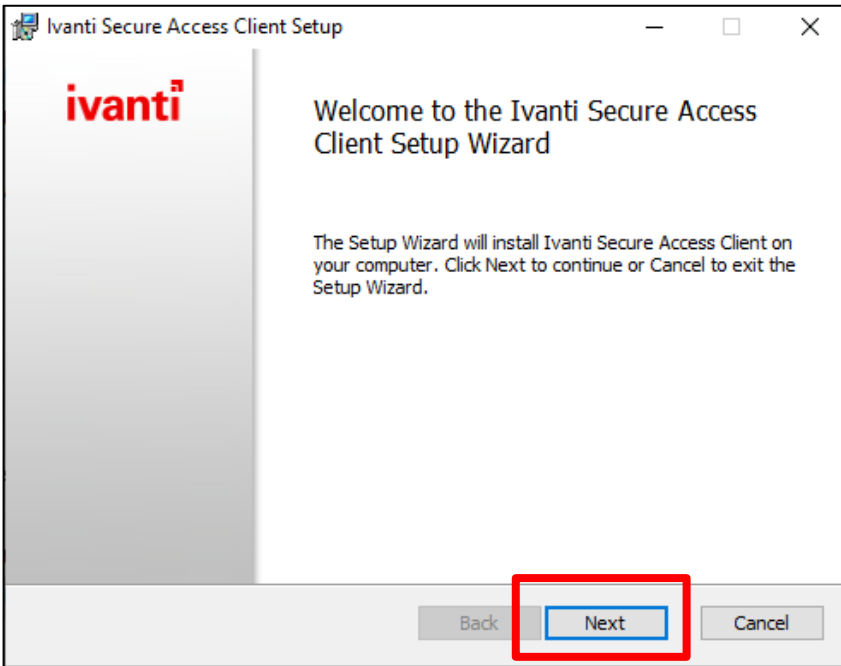
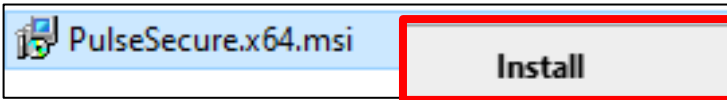
TOYOTA SYSTEMS
CORPORATION

Date

Jul. 24, 2023

(7) Please download from the URL below and run the installation.

<https://www.toyotasystems.com/service/network/intra-ssl/jp/doc/PulseSecure.x64.msi>



[STEP2] Install certificate and software

Written by

TOYOTA SYSTEMS
CORPORATION

Date

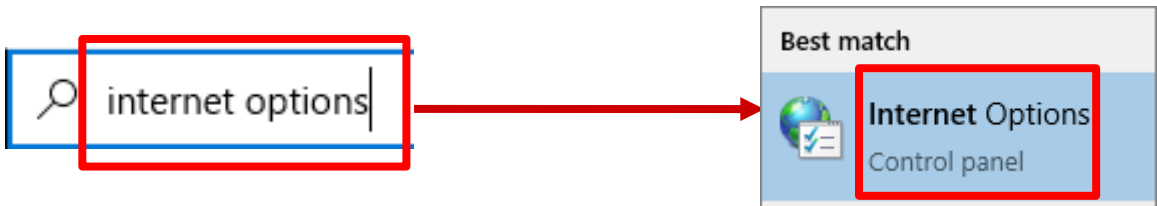
Jul. 24, 2023

Adding Trusted Sites

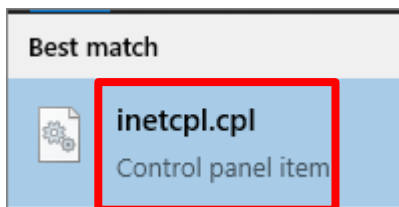
(8) Click "Windows" Icon.



(9) Type "internet options" to open the setting window



Note) If you can't open it, type "inetcpl.cpl" instead and Enter.



[STEP2] Install certificate and software

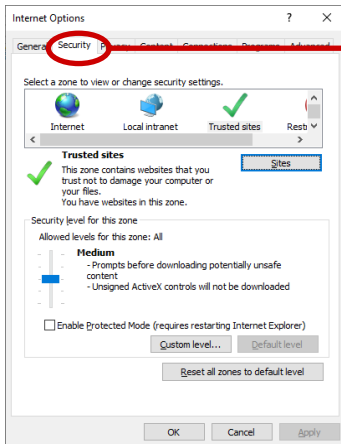
Written by

TOYOTA SYSTEMS
CORPORATION

Date

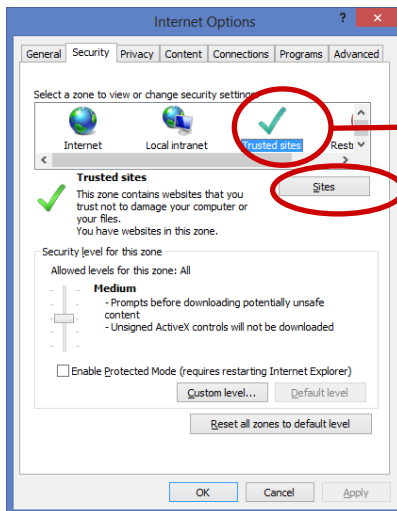
Jul. 24, 2023

(10) Click “Security” at Internet Option.



Click Security.

(11) Choose “Trusted sites” and click “Sites”.



(1) Choose Trusted sites.

(2) Click Sites.

[STEP2] Install certificate and software

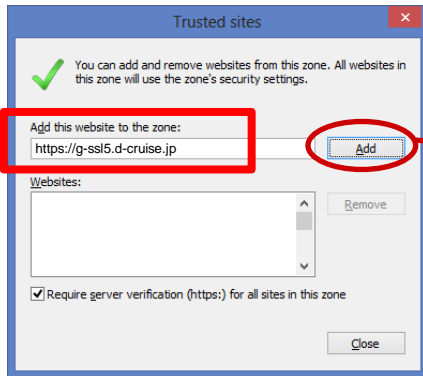
Written by

TOYOTA SYSTEMS CORPORATION

Date

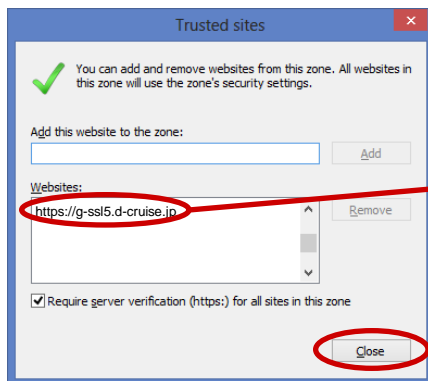
Jul. 24, 2023

(12) Type **https://g-ssl5.d-cruise.jp** in the upper box and add it.



Click Add.

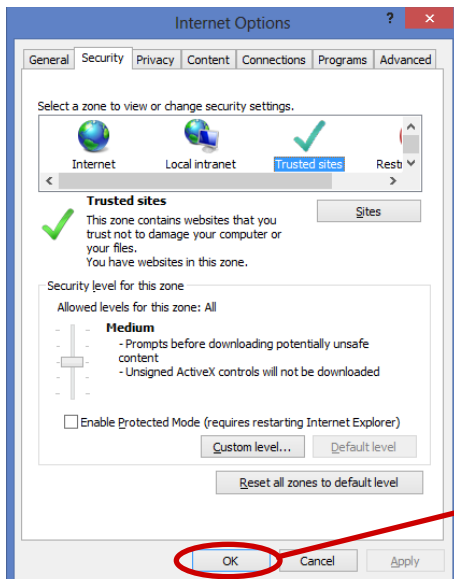
(13) Check URL added to Websites, then click “Close”.



(1) Check URL.

(2) Click Close.

(14) Click “OK” and close Internet Option.



Click OK.

[STEP2] Install certificate and software

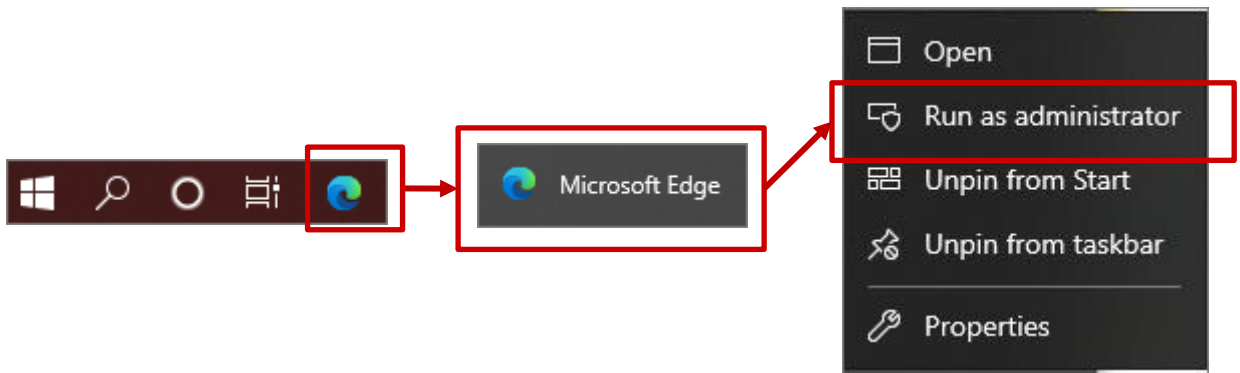
Written by

TOYOTA SYSTEMS
CORPORATION

Date

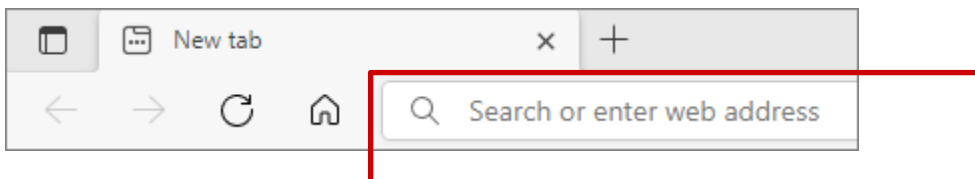
Jul. 24, 2023

(15) Right-click on “Microsoft Edge” icon in the task bar.
Then, right-click on the pop-up menu and click “Run as administrator”



(16) Open the below URL in browser

<https://g-ssl5.d-cruise.jp/>



[STEP2] Install certificate and software

Written by

TOYOTA SYSTEMS
CORPORATION

Date

Jul. 24, 2023

(17) Type ID and Password to sign in Intra SSL.

Welcome
Please enter the details to access your portal

Username


Password

Sign In

When you finish entering the Username and new Password, please click the **Sign in**.

note) You may see a popup like this below, you can ignore it.

How do you want to open this file?

 Look for an app in the Store

More apps ↓

Always use this app to open .xlsx files

OK

x

[STEP2] Install certificate and software

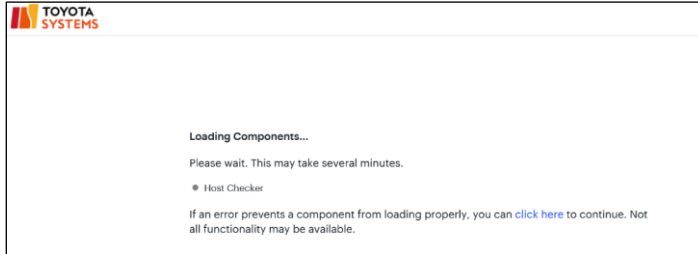
Written by

TOYOTA SYSTEMS
CORPORATION

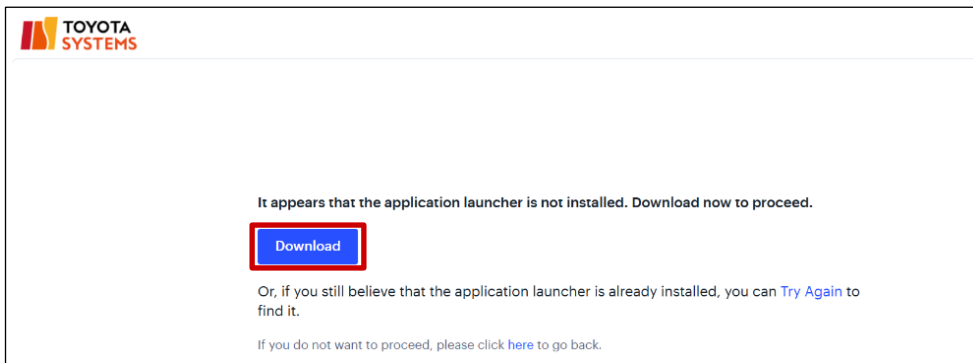
Date

Jul. 24, 2023

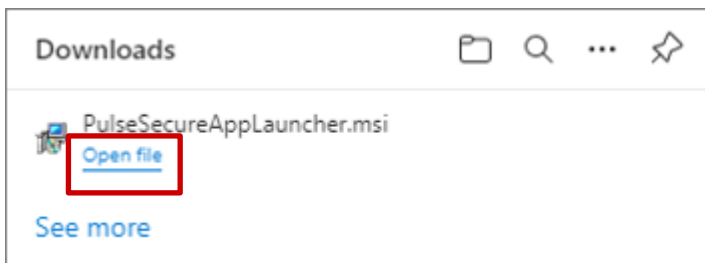
(18) Wait until the loading finish.



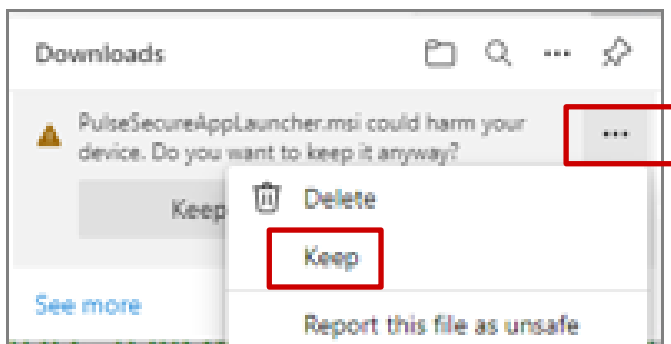
(19) When signing in for the first time, You need to download and install the "App Launcher".



(20) After download, open the file to install it.



note) When blocked, save the file clicking 「...」 in the right of the message.



[STEP2] Install certificate and software

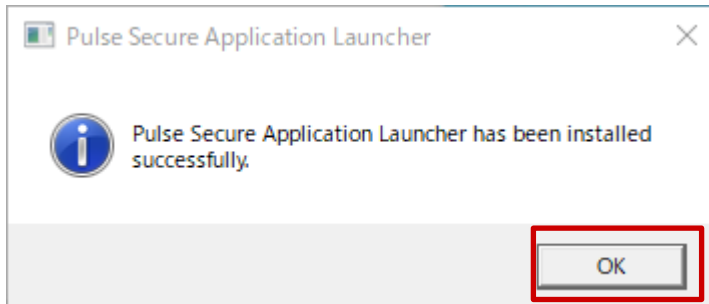
Written by

TOYOTA SYSTEMS
CORPORATION

Date


Jul. 24, 2023

(21) Click OK after the installation.




(22) When the page turns into the following, and click "here" (the red square below).

After the application launcher has completed downloading, follow these installation steps.

A screenshot of a Windows desktop. On the left, a browser window shows a download bar with a file named "PulseSecureAppLauncher.exe". A green arrow points to the file with the text "Click". On the right, a "Security Warning" dialog box is open, asking "Do you want to run this file?". The dialog shows details for "Pulse Secure, LLC" and "Windows Installer Package". A green arrow points to the "Run" button with the text "Click 'Run'". Below the dialog, the text "HERE" is highlighted with a red square.

Once you have completed the above steps, click **HERE** to continue with the Pulse Secure launch. We recommend selecting "remember" and "always" during the installation process.

Once the Pulse Secure application is installed and started it will appear in your system tray.

A screenshot of the Windows system tray showing the Pulse Secure application icon, which is a blue square with a white pulse symbol. A blue arrow points to the icon.

(23) The popup appearing, Check "Always allow ~" and open it.

This site is trying to open Pulse Secure Ap...ation Launcher.

https://g-ssl5.d-cruise.jp wants to open this application.

Always allow g-ssl5.d-cruise.jp to open links of this type in the associated app

Open Cancel

[STEP2] Install certificate and software

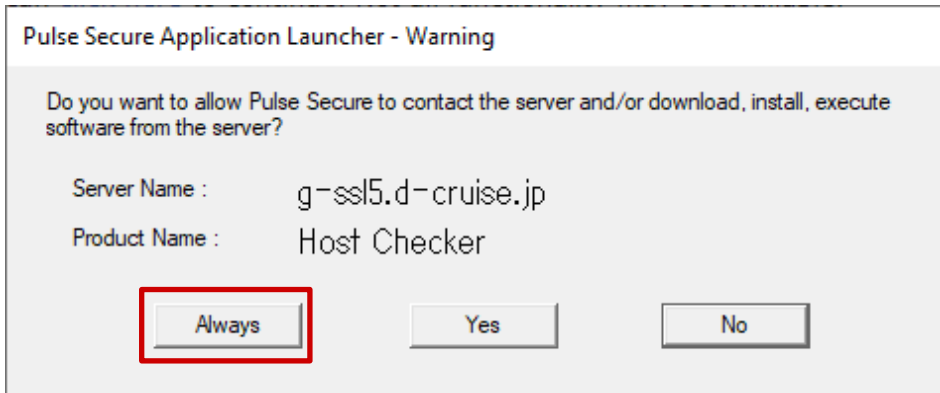
Written by

TOYOTA SYSTEMS
CORPORATION

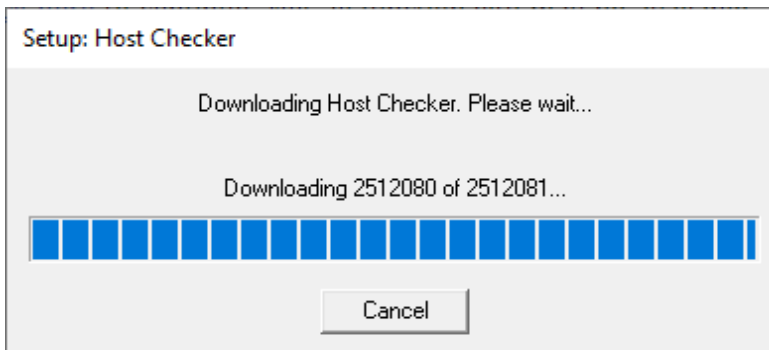
Date

Jul. 24, 2023

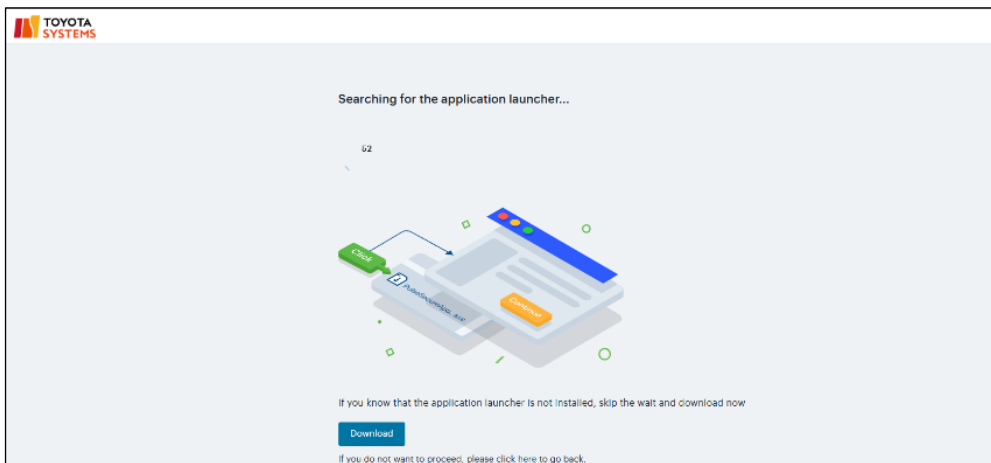
(24) Click “always” in the popup below.



(25) Wait until the installation finish.



note) Do Nothing in the page below.



[STEP2] Install certificate and software

Written by

TOYOTA SYSTEMS
CORPORATION

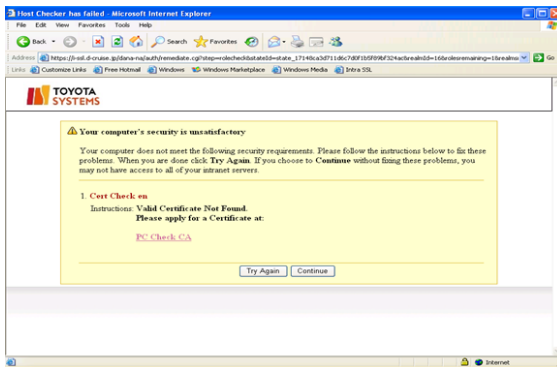
Date

Jul. 24, 2023

Install a Certificate: Confirming necessity

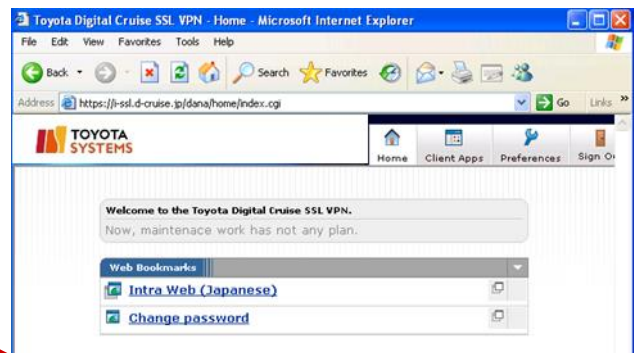
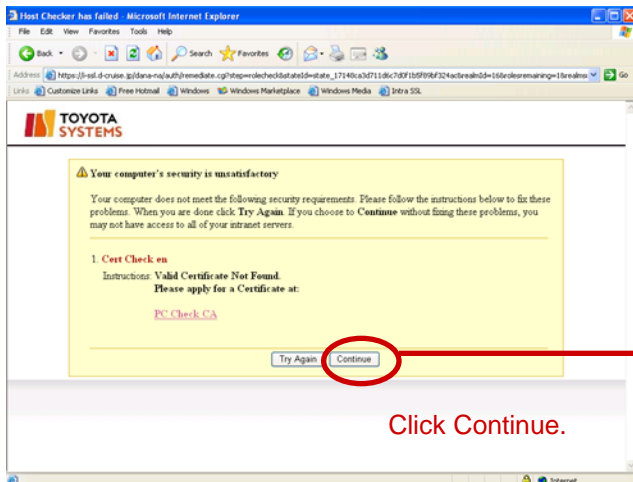
(26) The screen below appears on the display.

Note: The presence of this screen doesn't mean a trouble indicated. Once a certificate installation is completed, it will disappear.



Note: If you use an application without PC Check Service; Follow the instructions below to use applications. Certificate installation is not required but **applications with PC Check Service are hidden from the screen menu.** To check if PC Check Service is available in the application you are currently using, please contact each help desk. If you want to use an application with PC Check Service, go on to (13).

* Click **Continue** on the screen above.



* Applications without PC Check Service are available
* Applications with PC Check Service are hidden.

[STEP2] Install certificate and software

Written by

TOYOTA SYSTEMS
CORPORATION

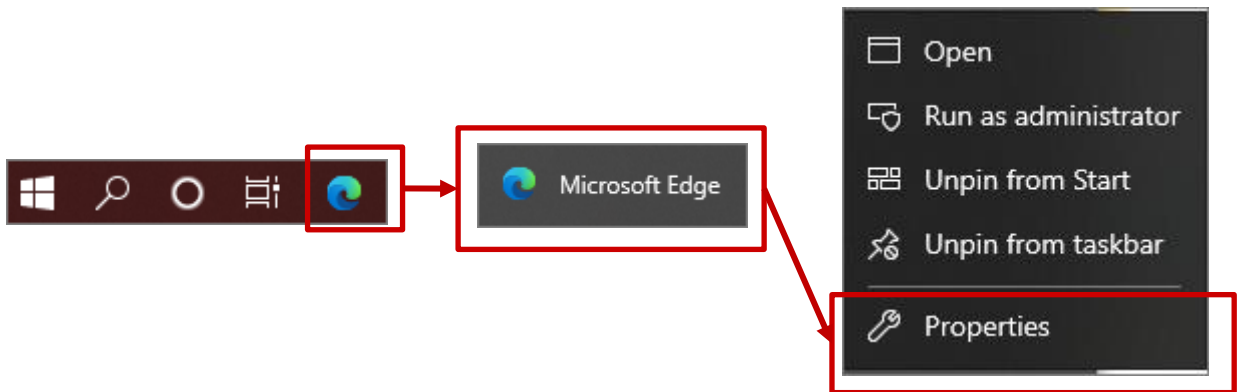
Date

Jul. 24, 2023

Install a Certificate

: Start the browser with administrator rights

(27) Right-click on “Microsoft Edge” icon in the task bar.
Then, right-click on the pop-up menu and click “Property”



[STEP2] Install certificate and software

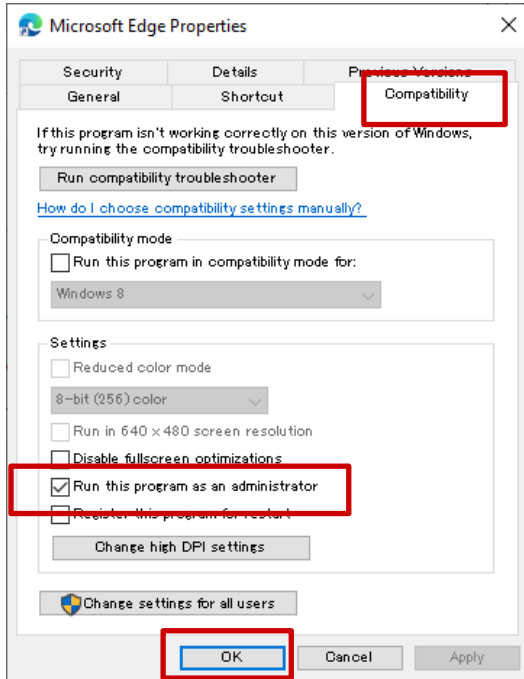
Written by

TOYOTA SYSTEMS
CORPORATION

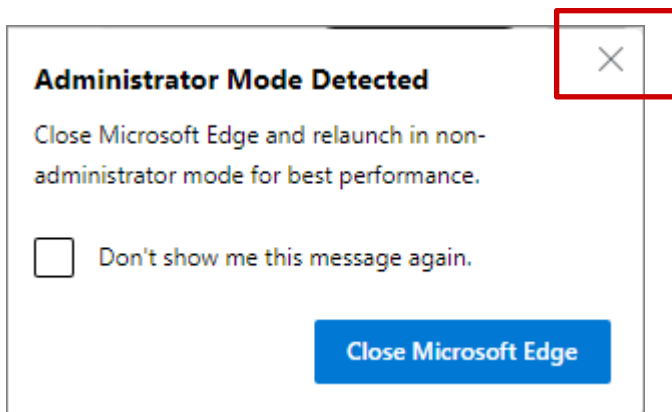
Date

Jul. 24, 2023

(28) Check “Run this program as an administrator”
in compatibility tab and OK



(29) Restart the Edge browser
The popup below shows that IE mode run as Administrator.
Please close the popup.



[STEP2] Install certificate and software

Written by

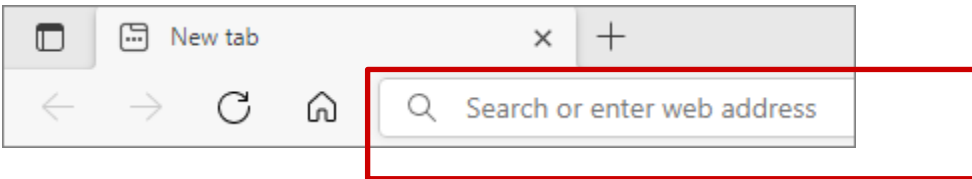
TOYOTA SYSTEMS
CORPORATION

Date

Jul. 24, 2023

(30) Open <https://da-ssl.d-cruise.jp> on Edge browser.

<https://da-ssl.d-cruise.jp/>



[STEP2] Install certificate and software

Written by

TOYOTA SYSTEMS
CORPORATION

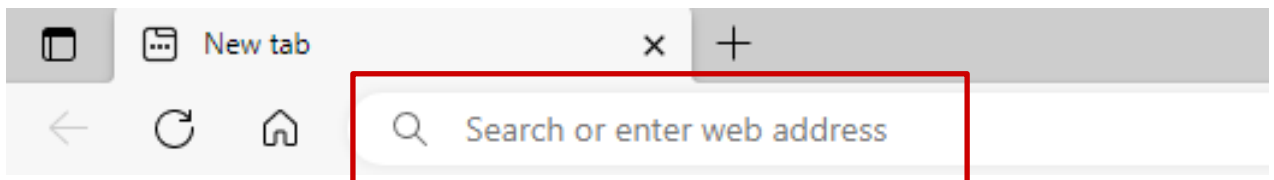
Date

Jul. 24, 2023

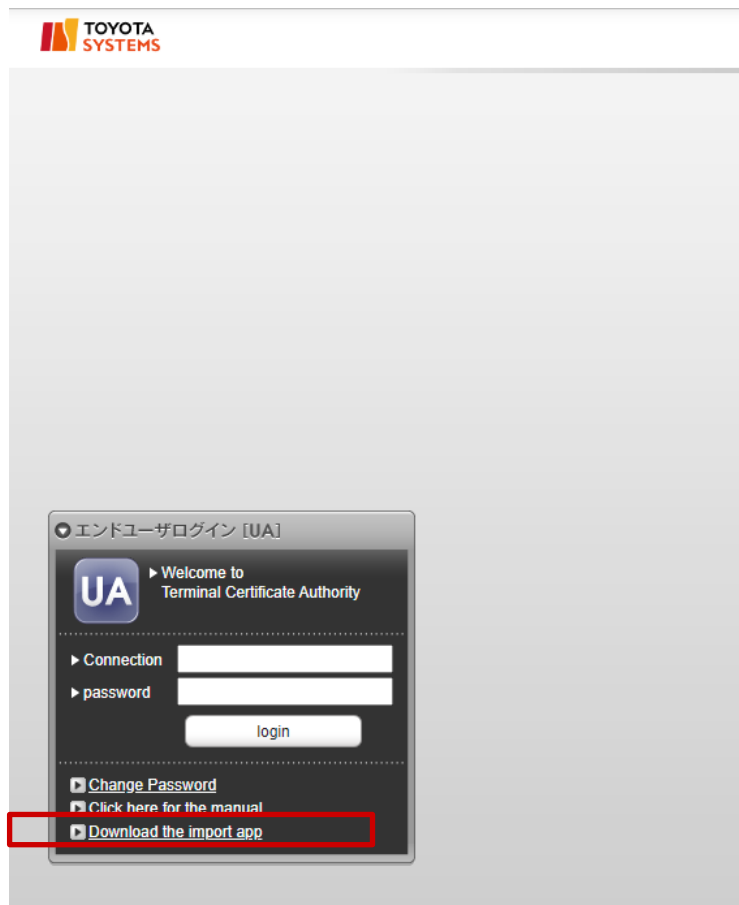
Certificate Installation : Certificate DL Tool Installation

(31) Start your browser (Microsoft Edge), type the following URL in the address bar in the address bar and press the Enter key.

<https://da-ssl.d-cruise.jp/>



(32) Click "Download the Import App" in the red frame.



[STEP2] Install certificate and software

Written by

TOYOTA SYSTEMS
CORPORATION

Date

Jul. 24, 2023

Certificate Installation : Certificate DL Tool Installation

(33) You will be redirected to the following screen.
Install the Gléas CertImporter application.



If you are using Google Chrome, please install it from [here](#).

Gléas CertImporter Application Installation Instructions

STEP1 Download the installer

Click the button below to download the Gléas CertImporter installer (SetupCertImporter .msi).

 download

STEP2 Run the installer

The message "Blocked because it may cause problems with your device" is a message from a feature called Microsoft Defender SmartScreen that prompts you to check for the risk of the file you're trying to download.

If prompted, do the following:

1. Hover over "Blocked because it may cause problems with your device" in the upper right corner of the screen.

(34) Finally, restart Edge and proceed to the next step

STEP10 Restart Edge

When you start Edge again, the Gléas CertImporter will be available.

* If you restart Edge before STEP8, you will not be able to use Gléas CertImporter. Be sure to restart Edge after STEP8.

[STEP2] Install certificate and software

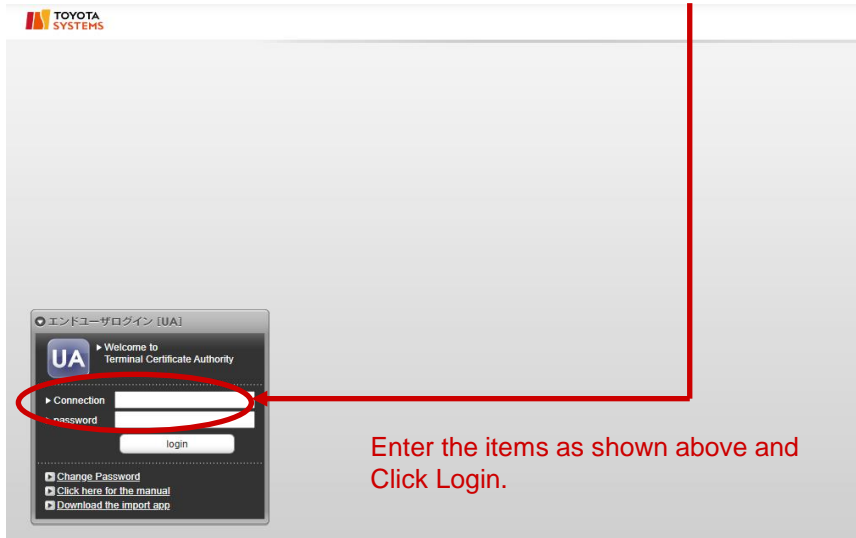
Written by

TOYOTA SYSTEMS
CORPORATION

Date

Jul. 24, 2023

(35) Enter your Connection ID(Username) and Password.



If the security warning dialog as shown below appears, press “Install”.



[STEP2] Install certificate and software

Written by

TOYOTA SYSTEMS
CORPORATION

Date

Jul. 24, 2023

(36) Enter the Following information.

Email : Your Email address which you can receive it.

Email(Confirm) : Re-Enter your Email address

Family name : Enter your Family name

First name : Enter your First name

Company : Enter your Company

At last, Push "Register" button.

The screenshot shows a web browser window with the URL <https://da-ssl.d-cruise.jp/ua/pc/login/new/2>. The page displays the Toyota Systems logo and the heading "[User Application]". Below this is a "User Application" section with a "Sign-up (PC)" sub-heading. A message states: "Please fill in the form below: All fields are required." The form contains the following fields:

- Connection ID
- Email *
- Email(Confirm) *
- Family name *
- First name *
- Company *
- Certificate type (Certificate for PC)

At the bottom of the form, there is a "Register" button, which is circled in red. A message below the form reads: "Push 'Register' button to proceed the registration." A "Privacy Policy" link is visible in the bottom right corner.

[STEP2] Install certificate and software

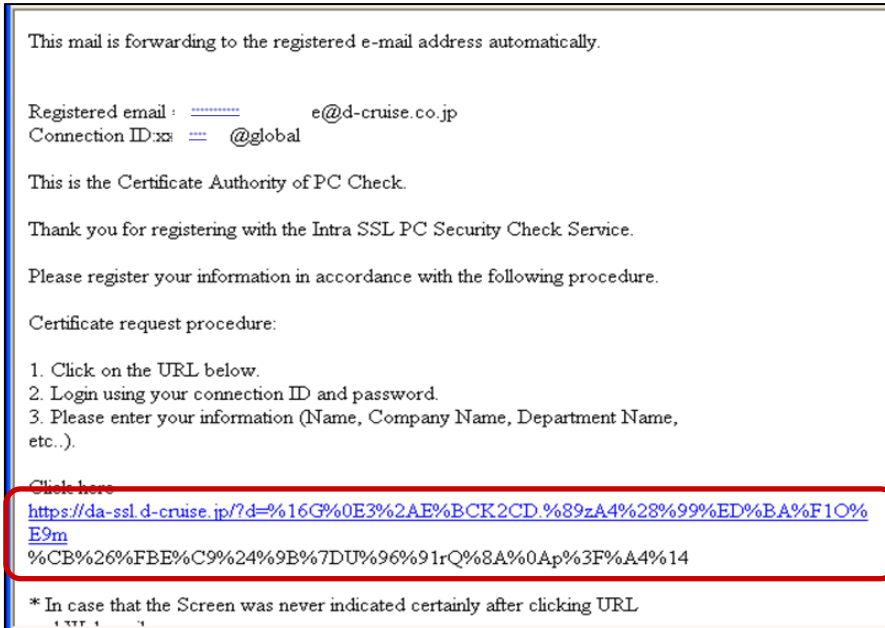
Written by

TOYOTA SYSTEMS
CORPORATION

Date

Jul. 24, 2023

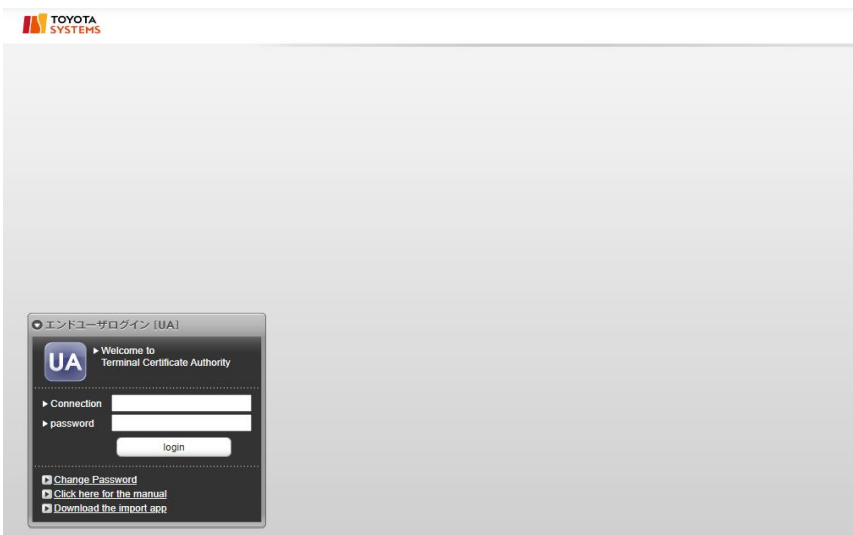
(37) You will receive the notice mail. Click the URL below to confirm Certificate Issuance.



If the hyperlink in the notice mail dose not work, please copy the URL and paste on address bar of Browser.

Notice) It takes **3 business days** for the certificate to be issued.
If you haven't received the email after **more than one week**,
Please contact us (TS CUSTOMER CENTER).

(38) Access to <https://da-ssl.d-cruise.jp> again.
Type your Username and Password to login.



[STEP2] Install certificate and software

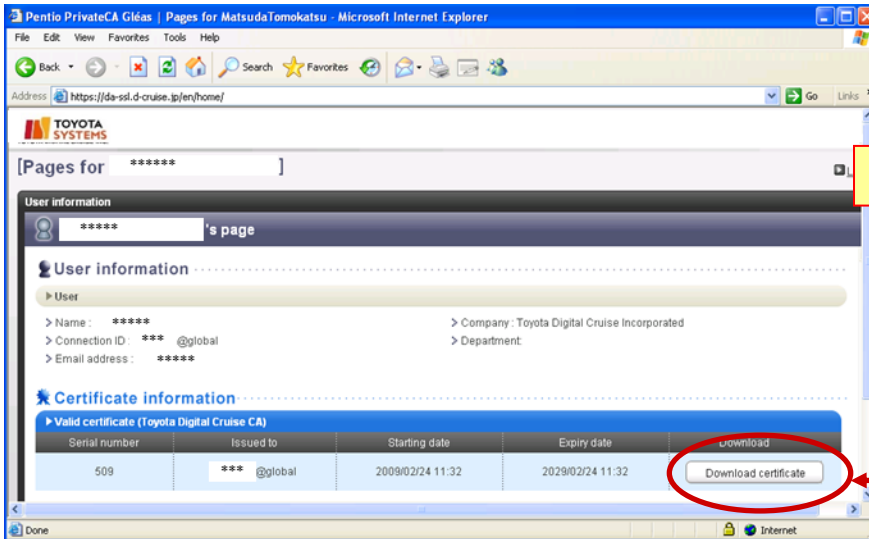
Written by

TOYOTA SYSTEMS
CORPORATION

Date

Jul. 24, 2023

(39) The following message will appear on the screen.
Click Download certificate.



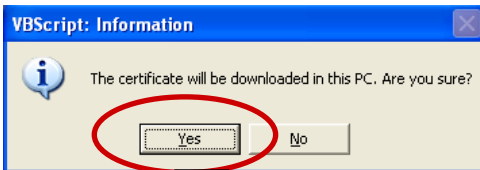
Click Download certificate.

Notice)

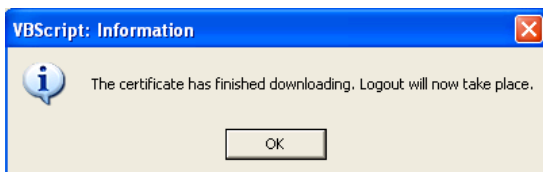
- Downloading should be executed on PC which User will login to IntraSSL Service.

- The Certificate can't move to another PC after downloaded.

- In case of replacement PC or re-install the OS, the certificate should be reissue and downloaded again. To reissue the certificate, check the manual: Manual for PC Replacement



Click "Yes"



When the 'finish download' dialog appears on the screen, it is the completion of a Certificate installation. Click OK.

[STEP2] Install certificate and software

Written by

TOYOTA SYSTEMS
CORPORATION

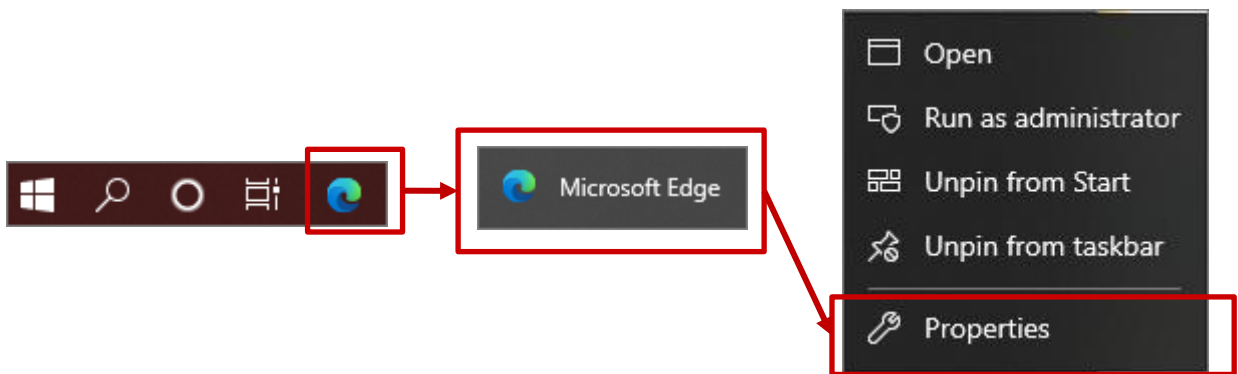
Date

Jul. 24, 2023

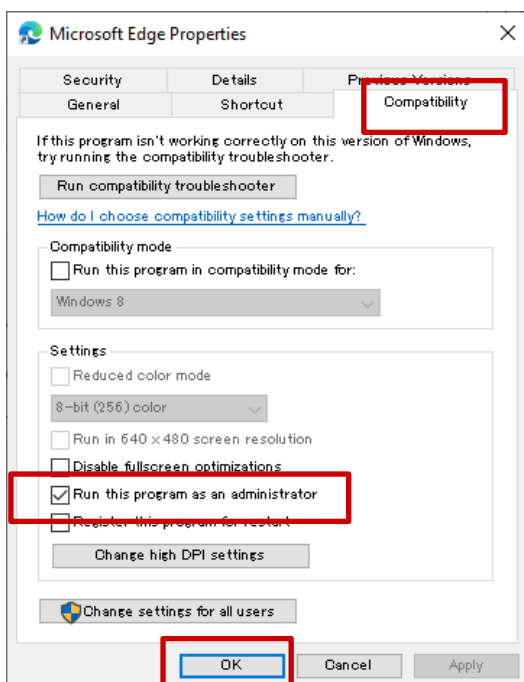
Install a Certificate : Remove administrator rights

note) This procedure should be done after importing the certificate

(40) Right-click on “Microsoft Edge” icon in the task bar.
Then, right-click on the pop-up menu and click “Property”



(41) Uncheck “run as an administrator” in compatibility tab and OK



[STEP3] Connect to Intra SSL

Written by

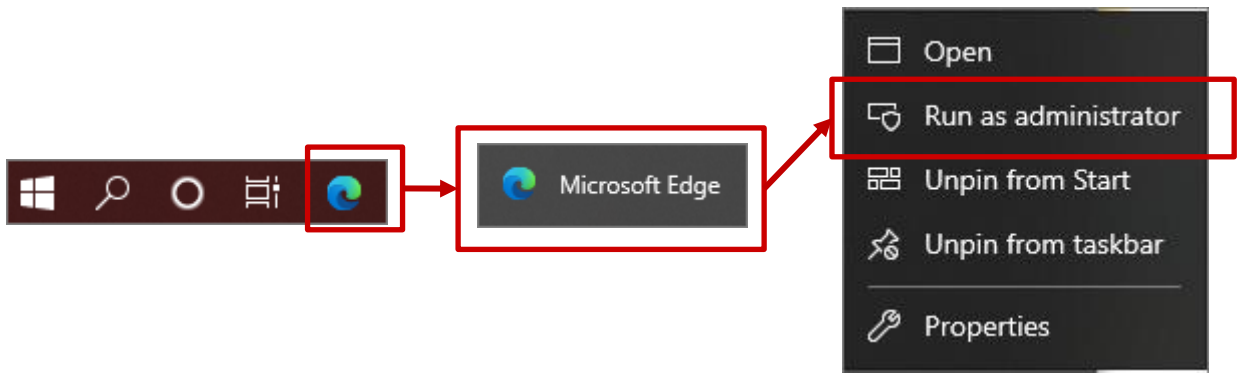
TOYOTA SYSTEMS
CORPORATION

Date

Jul. 24, 2023

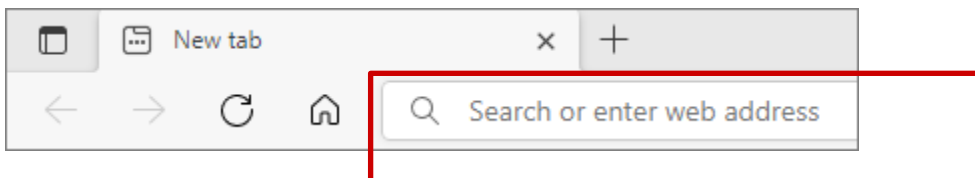
Connect to Intra SSL

- (1) Right-click on “Microsoft Edge” icon in the task bar.
Then, right-click on the pop-up menu and click “Run as administrator”



- (2) Open the URL below

<https://g-ssl5.d-cruise.jp/>



[STEP3] Connect to Intra SSL

Written by

TOYOTA SYSTEMS
CORPORATION

Date

Jul. 24, 2023

(3) Type ID which you can see in the implement notice mail and new password to sign in.

note) You can find your ID in details of 「Intra-SSL App ID registration notice」
Uppercase letters are different from lowercase ones.

Welcome
Please enter the details to access your portal


Username

Password

Sign In

When you finish entering the Username and new Password, please click the **Sign in**.

(4) Wait until loading finish and the page changes.

 **TOYOTA SYSTEMS**

Loading Components...

Please wait. This may take several minutes.

- Host Checker.....

If an error prevents a component from loading properly, you can [click here](#) to continue. Not all functionality may be available.

Components loaded successfully

[STEP3] Connect to Intra SSL

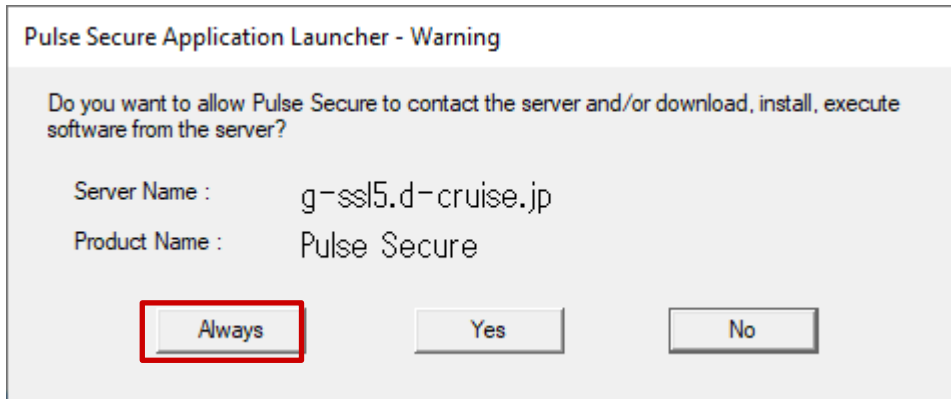
Written by

TOYOTA SYSTEMS
CORPORATION

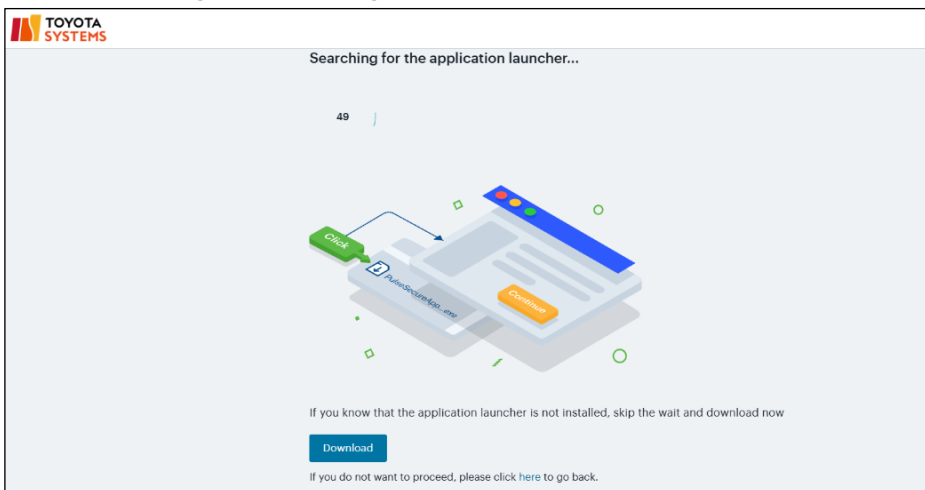
Date

Jul. 24, 2023

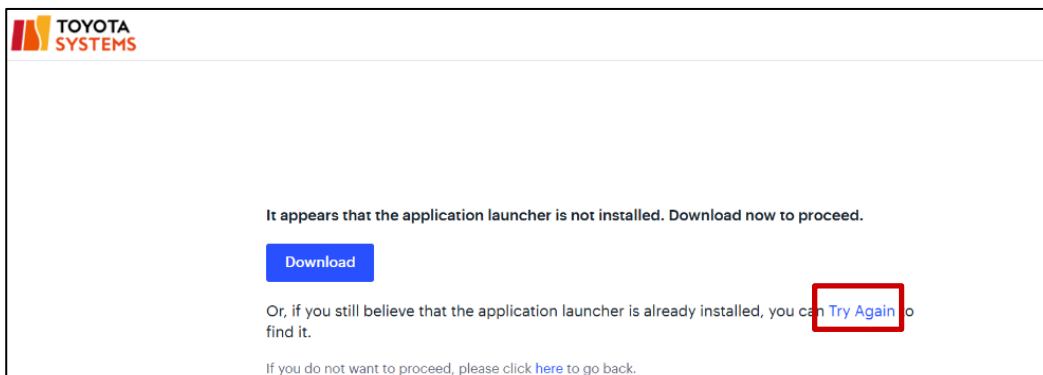
(5) Click “always” in the popup below then wait until installation finish.



(6) Do Nothing in the page below.



note) If you see the page below though you already installed the App Launcher, click “Try Again” (red square below) .



[STEP3] Connect to Intra SSL

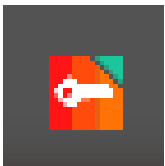
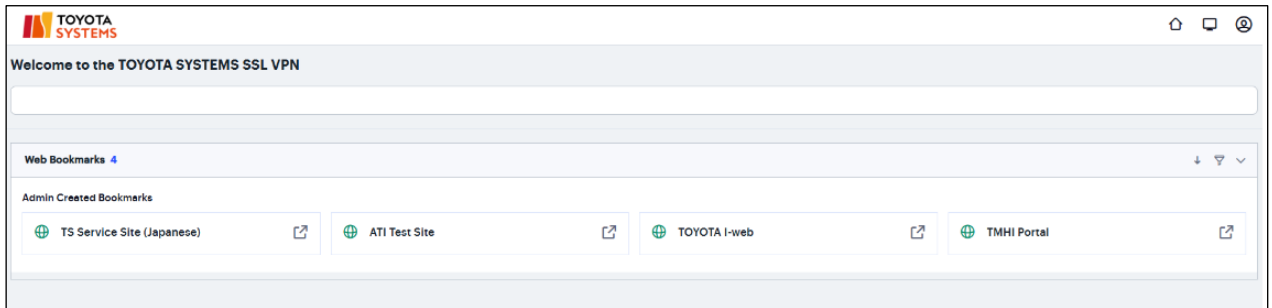
Written by

TOYOTA SYSTEMS
CORPORATION

Date

Jul. 24, 2023

- (7) When the installation is complete, you will see the following screen that the installation was successful:
- you can find the orange "key" mark at the lower right on the desktop.
 - *If you close the window, this connection has been continued connect to Intra SSL.

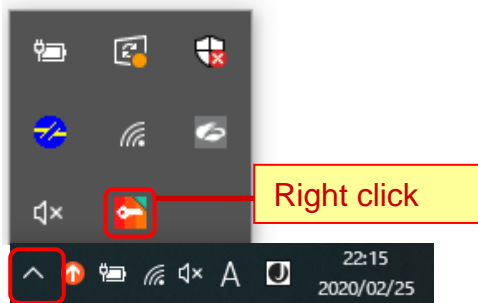


The symbol mark: **Ivanti Secure Access Client**
This picture will appear on under the task bar.

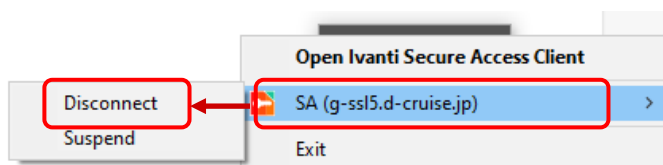
Please try the connection according to the procedure of the contracted application.

How to disconnect from Intra SSL

- (1) Right click the icon on under the task bar.



- (2) Click **SA(g-ssl5.d-cruise.jp) > Disconnect**



Installation Manual on Intra SSL Service (PC Check)

Written by

TOYOTA SYSTEMS
CORPORATION

Date

Jul. 24, 2023

Table of Contents: FAQ

Contents	Page
(1) What can I do when I cannot connect to Intra SSL at STEP 3?	33
(2) What can I do when application is unavailable?	34
(3) How can I re-install OS to PC for Intra SSL or transfer to another PC?	34

FAQ

(1) What can I do when I cannot connect to Intra SSL at STEP3?

1. Intra SSL Service page doesn't appear on screen.
Please check the URL of Intra-SSL Service Page is correct.

<https://g-ssl5.d-cruise.jp/>

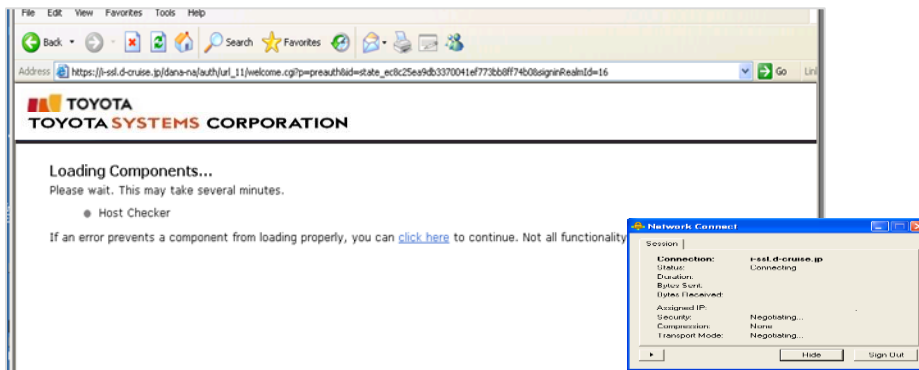
2. Whenever I entered Username and Password at Intra SSL Service Page, 'Invalid Username or Password' message pops up on the screen.

Username or Password you entered may be incorrect.
Please enter Username and Temporary Password described in *Intra SSL Application Username (Registration)*.

If it is not your first try to connect to Intra SSL, enter your new Password.

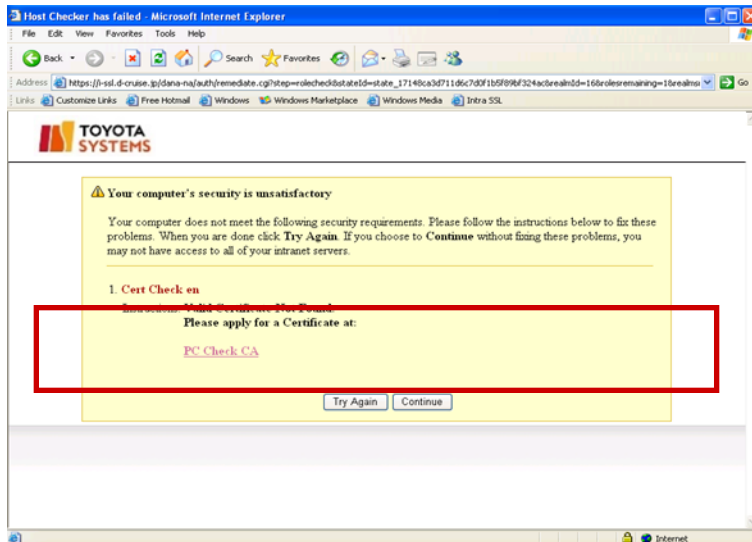
If you forgot your Password, please contact the help desk depicted in page 2.

3. When installing Intra SSL, the message dialog remains on the screen and freezes.



Please consult STEP 1 found in Installation Manual again.

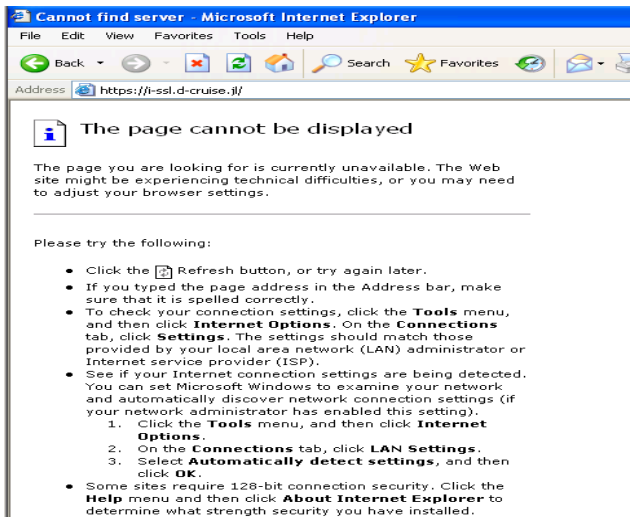
4. Whenever installing or booting, the following security alert appears on screen.



If Cert Check message appears on the screen;
Please consult STEP 2 found in Installation Manual again.

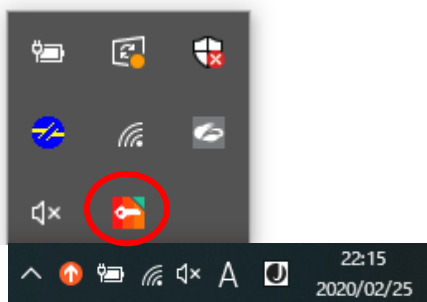
(2) What can I do when application is unavailable?

If you cannot connect to systems after the completion of installation, and the following message 'The page cannot be displayed' appears on screen, please make sure you be connected to Intra SSL Service.



[Check]

Check if the icon appears at the right bottom of the screen.



[The icon is absent]

You are not connected to Intra SSL Service.

Please check STEP 3 found in Connect to Intra SSL, so as to try again.

[The icon is present]

You are connected to Intra SSL Service.

Please check the application address (URL) you are currently using.

If it is correct, go on to contact the help desk for the application you are currently using.

(3) How can I re-install OS to PC for Intra SSL , or transfer to another PC?

Intra SSL installation and re-issue of Certificate are required.

For the re-issue of Certificate, please contact the help desk depicted in page 2.