

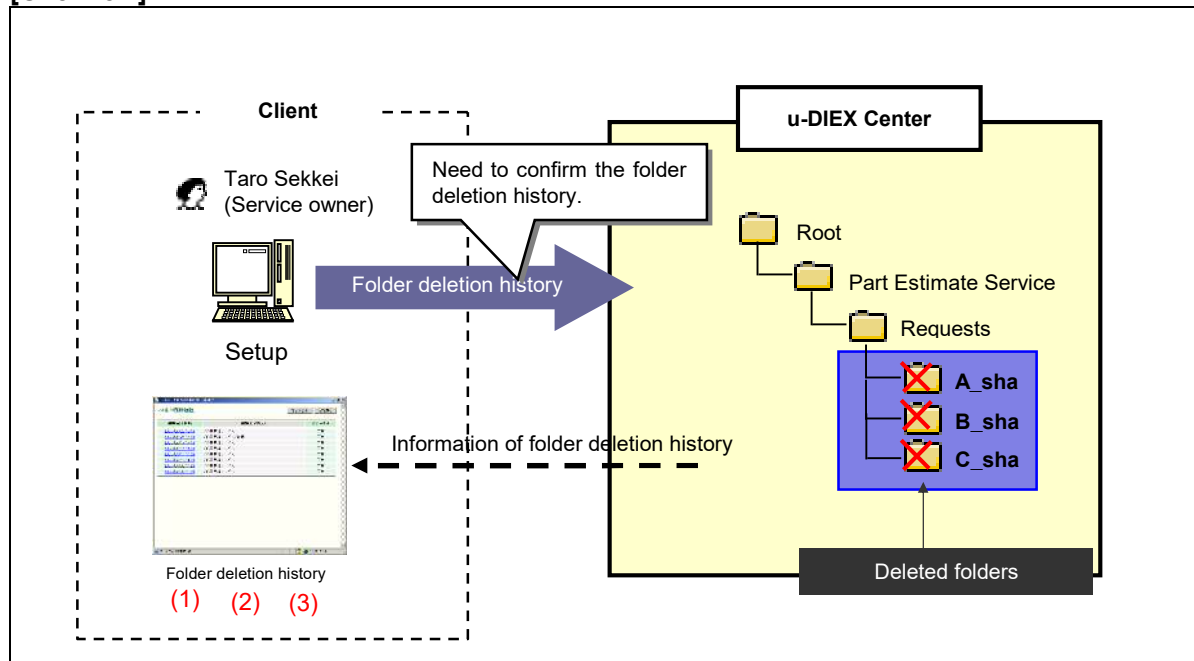
8.1.8.Folder deletion history

[Function explanation]

[Function outline]

Displays the history of the folder deleted by logon user.

[Overview]



*This overview indicates the following process: Taro Sekkei, a service owner confirms the history that the folders in 'Part Estimate Service' have been deleted.

[Main functions]

(1) Display folder deletion history.

Displays the history of the folder deleted by logon user.

(2) Terms of history display

The history can be confirmed for 30 days after the folders have been deleted.

(3) Display number of history

Folder Deletion History can be displayed up to 10.

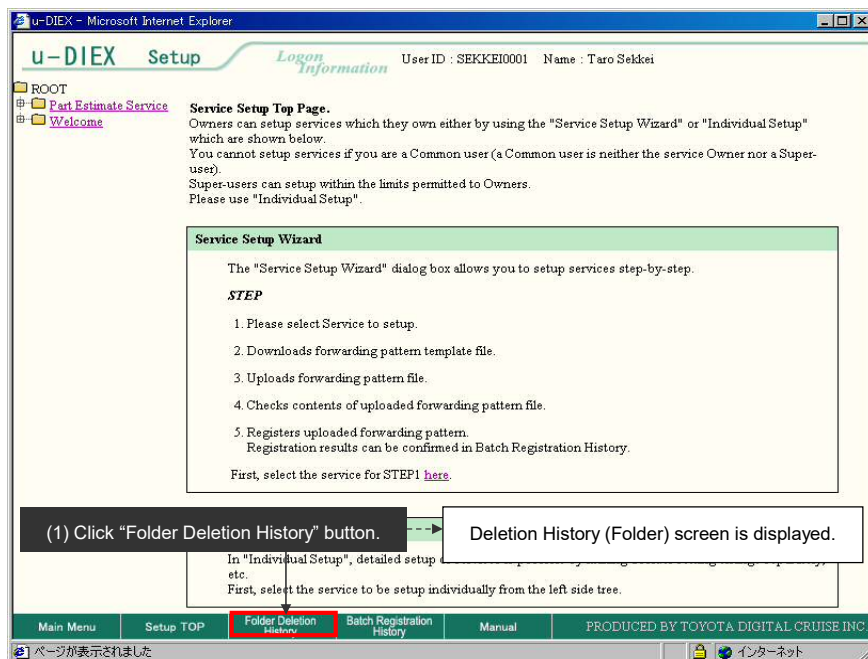
[Operating explanation with the screens]

Explains the procedure for confirming Folder Deletion History in the overview by using Web-EDI screen.

-Display of Folder Deletion History.

(1) Click "Folder Deletion History" button.

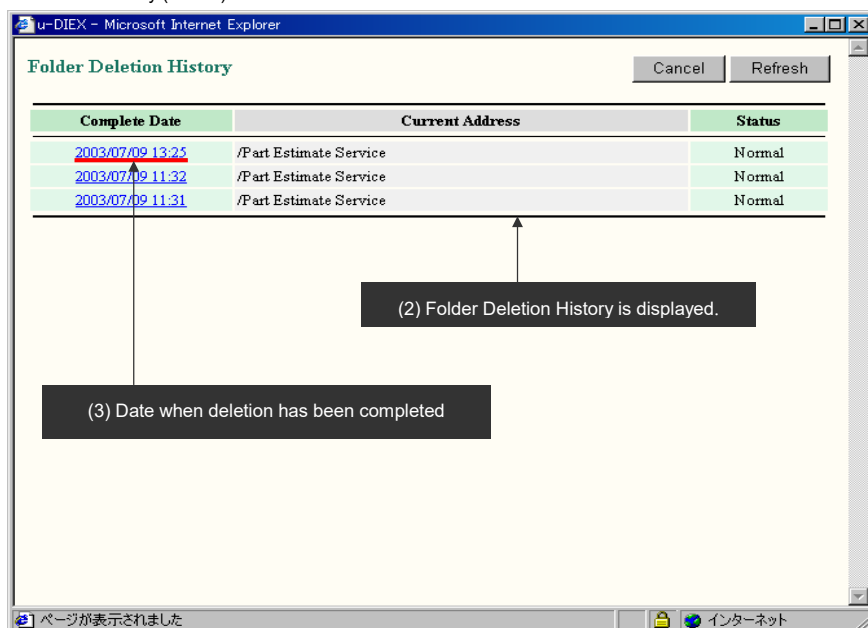
<Setup Top>



(2) Folder Deletion History is displayed in Deletion History (Folder) screen.

(3) Click on "Complete Date".

< Deletion History (Folder)>



(4) The detailed Folder Deletion History is displayed.

< Deletion History Details (Folder)>

