

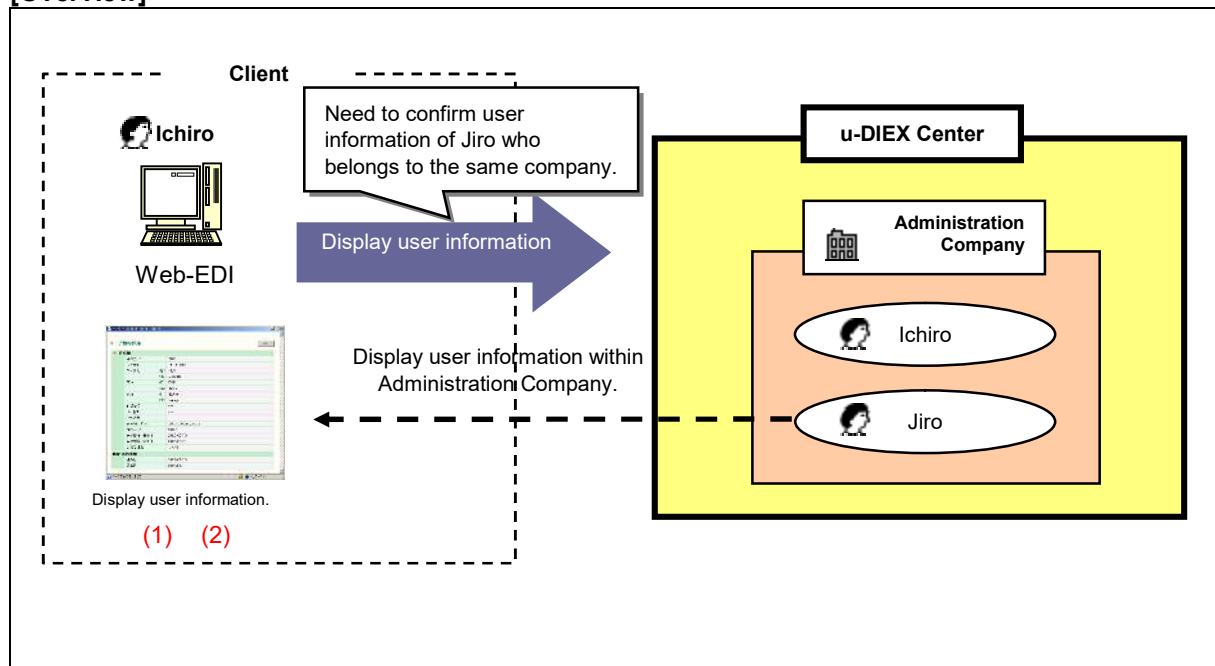
## 7.2.3 Display user information

### [Function explanation]

#### [Function outline]

Displays user information of logon user's company.

#### [Overview]



This overview indicates the following process: Ichiro, a Company administrator confirms user information of Jiro who belongs to the same company.

#### [Main functions]

##### (1) Display user information.

Confirms the registered user information such as all user names, user ID, organization codes, Company code, country, addresses, E-mail addresses and Valid periods in the company that logon user belongs.

##### (2) Display registered and updated information.

Registration date and update date can be confirmed.

- ♦Registration date => Date when the user in the company that logon user belongs is registered in u-DIEX.

- ♦Update date => Date when the registration information is modified.

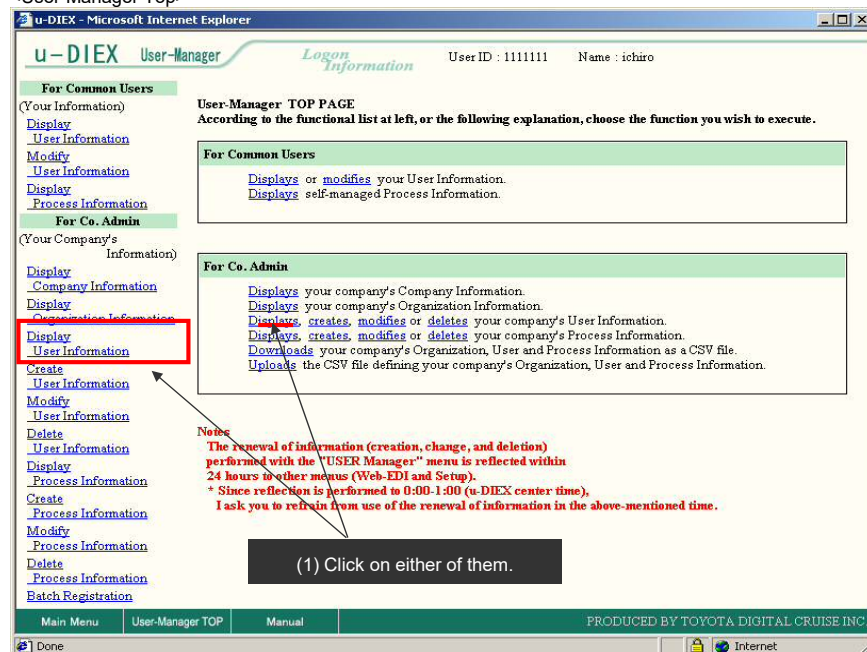
## [Operating explanation with the screens]

Explains the procedure for displaying user information in the overview by using Web-EDI screen.

### -Display user information of logon user's company.

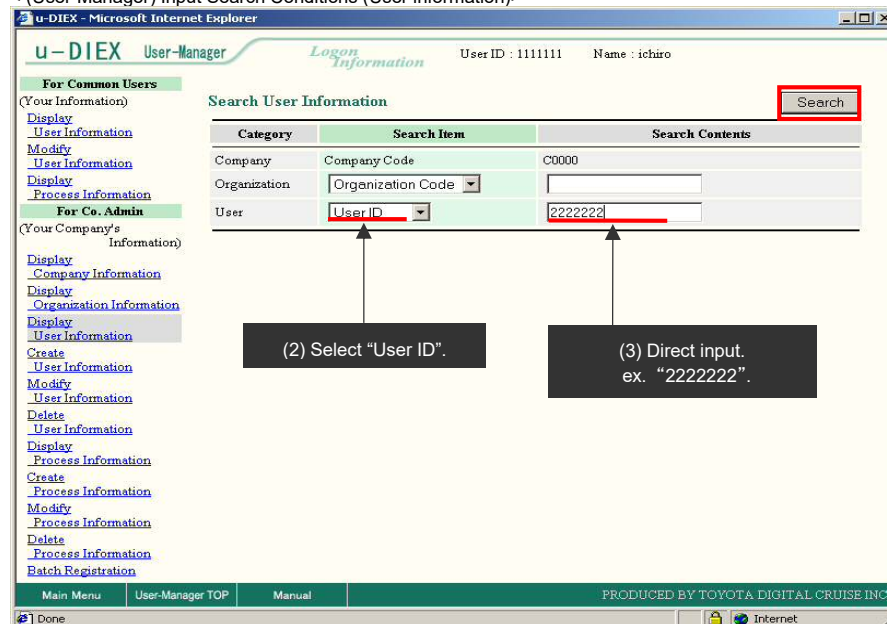
- (1) Click on "Display User Information" or "Displays your company's User Information" for Co. Admin.

<User-Manager Top>



- (2) Select "User ID" for User Search Item.
- (3) Input User ID being searched to User Search Contents.
- (4) Click "Search" button.

< (User-Manager) Input Search Conditions (User information)>



(5) Click on "User ID" in "User Information List".

< (User-Manager) List (User Information) >

u-DIEX User-Manager Logon Information User ID : 1111111 Name : ichiro

**For Common Users**  
(Your Information)  
[Display](#)  
[User Information](#)  
[Modify](#)  
[User Information](#)  
[Display](#)  
[Process Information](#)

**For Co. Admin**  
(Your Company's Information)  
[Display](#)  
[Company Information](#)  
[Display](#)  
[Organization Information](#)  
[Display](#)  
[User Information](#)  
[Create](#)  
[User Information](#)  
[Modify](#)  
[User Information](#)  
[Delete](#)  
[User Information](#)  
[Display](#)  
[Process Information](#)  
[Create](#)  
[Process Information](#)  
[Modify](#)  
[Process Information](#)  
[Delete](#)  
[Process Information](#)  
[Batch Registration](#)

**Search User Information** [Search]

Category	Search Item	Search Contents
Company	Company Code	C0000
Organization	Organization Code	
User	User ID	2222222

**User Information List**

Company code	User ID	User Name
C0000	2222222	jiro

(5) Click on "User ID".  
ex. 2222222

Main Menu User-Manager TOP Manual PRODUCED BY TOYOTA DIGITAL CRUISE INC.

(6) User information is displayed.

< User Information >

u-DIEX - Microsoft Internet Explorer

**User Information Details** [OK]

**User Information**

Company Code	C0000
User ID	2222222
User Name	jiro
Country	JAPAN
Address	GIFU
Postal Code	471
Telephone Number	0565-99-9999
FAX Number	0565-99-9999
E-mail Address	hayashid031@d-cruise.co.jp
Organization Code	S1001
Valid Period (Start Date)	2002/02/01 00:00
Valid Period (End Date)	2030/12/31 23:59
Co. Admin	Yes

**Registration/Update Information**

Registration Date	2002/02/01 15:54
Update Date	2002/09/05 15:09

ページが表示されました インターネット

(6) Screen is closed by clicking "OK" button.